



THE GOLF VILLAGE AT ADMIRAL'S COVE

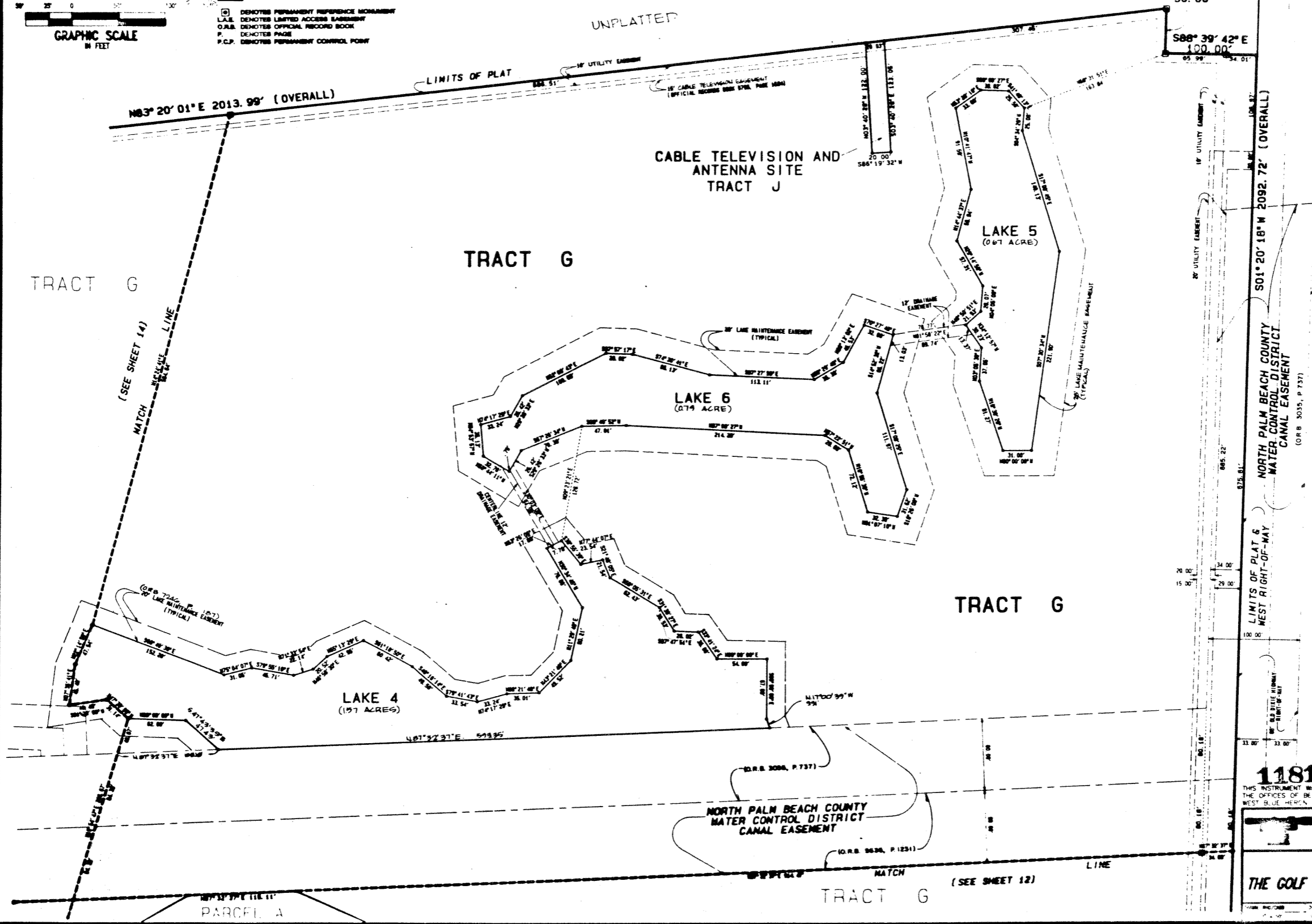
BEING A REPLAT OF A PORTION OF ADMIRAL'S COVE WEST PLAT NO. 1, AS RECORDED IN PLAT BOOK 62, PAGE 19, PUBLIC RECORDS, PALM BEACH COUNTY, FLORIDA, AND LYING IN SECTION 13, TOWNSHIP 41 SOUTH, RANGE 42 EAST, TOWN OF JUPITER, PALM BEACH COUNTY, FLORIDA

FEBRUARY, 1993

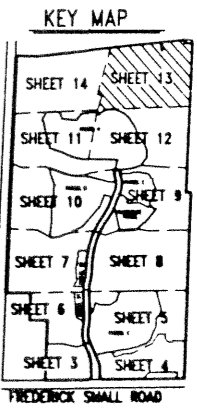
SHEET 13 OF 14

63
70 63

- LEGEND
- DENOTES PERMANENT REFERENCE MONUMENT
 - L.A.E. DENOTES LIMITED ACCESS EASEMENT
 - O.R.B. DENOTES OFFICIAL RECORD BOOK
 - P. DENOTES PAGE
 - P.C.P. DENOTES PERMANENT CONTROL POINT



100' F.E.C. RAIL ROAD RIGHT-OF-WAY (DEED BOOK 1, PAGE 3) ROAD BOOK 4, PAGE 228)



11810

THIS INSTRUMENT WAS PREPARED BY WM. R. VAN CAMPEN, IN AND FOR THE OFFICES OF BENCHMARK LAND SURVEYING & MAPPING, INC. 4152 WEST BLUE HERON BLVD., SUITE 121, PALM BEACH, FLORIDA

BENCHMARK LAND SURVEYING & MAPPING, INC.

RECORD PLAT

THE GOLF VILLAGE AT ADMIRAL'S COVE